

Magnetic beads for Click Chemistry

Azide beads / Alkyne beads

Benefits of Click Chemistry

- Azide and alkyne react specifically with each other, and not with other functional groups.
- Azide and alkyne can be introduced into various organic compounds.
- The reaction proceeds in organic solvents or water.
- The reaction efficiency is very high, and even a small amount of alkyne ligand or azide ligand can be immobilized on beads.

Applications

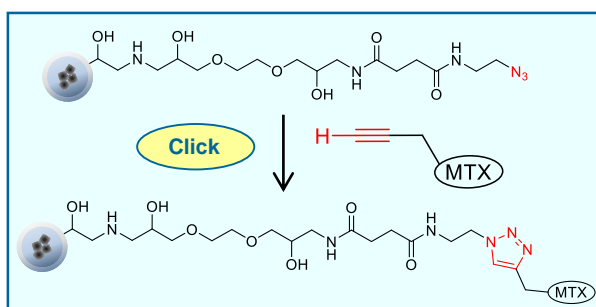
- Ligands with alkyne or azide structure (compounds, proteins, etc.) can be immobilized, and target proteins can be affinity purified from biological samples such as cell lysate solutions.
- If you want to site-selectively immobilize the ligand on the beads, you can immobilize it on the beads by introducing alkyne or azide into the ligand.

Example of Use (Purification of target protein of anticancer drug MTX)

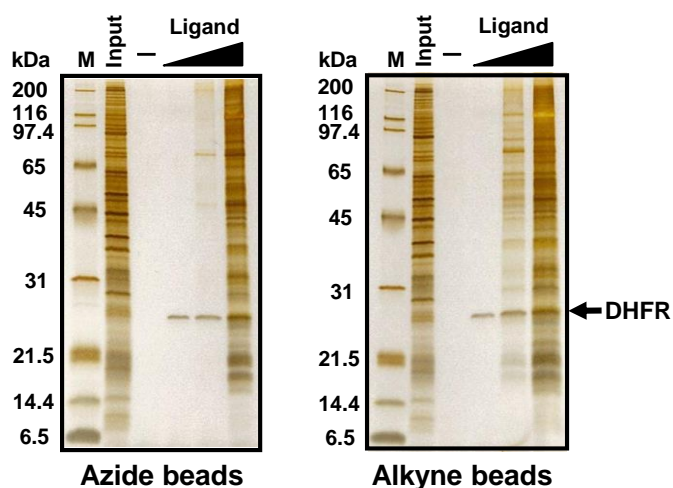
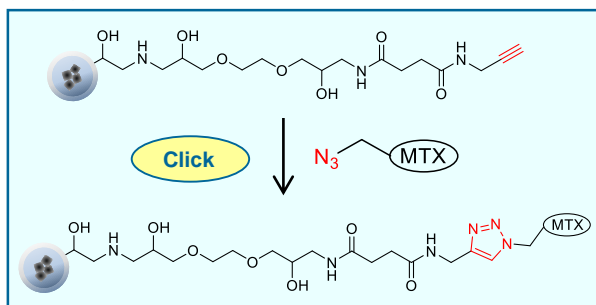
Alkyne or azide is introduced into MTX (Methotrexate) and immobilized on Azide beads or Alkyne beads.

Affinity purification of the target protein DHFR (Dihydrofolate reductase) from the HeLa cell lysate.

Azide beads



Alkyne beads



High-purity purification of target protein DHFR in low background.



Product name	Product number	Amount	Volume (Concentration)
Azide beads	TAS8848N1160	5mg	0.25 mL × 1tube (20mg/mL)
		10mg	0.25 mL × 2tubes (20mg/mL)
Alkyne beads	TAS8848N1161	20mg	0.25 mL × 4tubes (20mg/mL)

Please specify the amount when ordering.

【For sales inquiries】

North America

■Nacalai USA, Inc.

Address:10225 Barnes Canyon Rd., Suite A103 San Diego, CA 92121, USA

Phone:(858) 404-0403 Fax:(858) 404-0408

HP:<http://www.nacalaiusa.com/product.php?id=87>

Email:info@nacalaiusa.com

Europe, Asia, and other countries

■Tamagawa trading Co., LTD. Overseas Sales Department

Address:1-3-1 Haba-cho, Iida, Nagano Pref. 395-0063 Japan

Phone:+81-265-56-5423 Fax:+81-265-56-5427

E-mail : FGbeads@tamagawa-seiki.co.jp